

# The Facilities Management Guide to High-Level Cleaning Safety

High-level cleaning is an essential part of maintaining public spaces, but often, out of sight is out of mind. Dust accumulates in hard-to-reach areas such as beams, air vents, and lights, often escaping notice. Ignoring these areas can lead to significant consequences.

## Why is High-Level Cleaning Important?

Indoor air can be 2-5 times more polluted than outdoor air, and according to the World Health Organisation, poor indoor air quality is directly linked to conditions such as asthma, allergies and long-term lung issues. In public or commercial environments, every single movement sends high-level dust airborne, leaving it to settle in high spaces or be inhaled.

Dry dust is highly flammable- especially around electrical fittings, extraction ducts or machinery, meaning a single spark can lead to combustion.

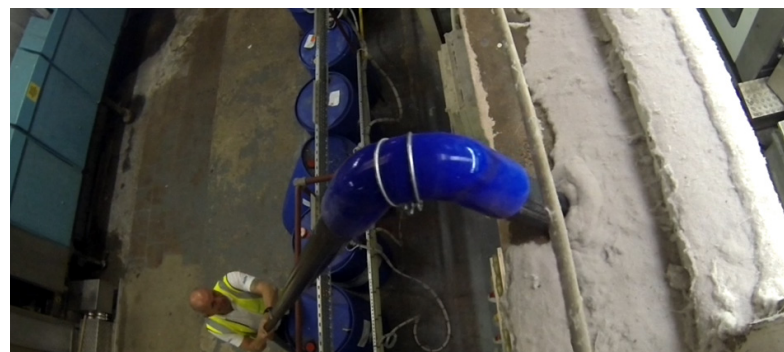
High-level dust can impact energy efficiency when it settles on air vents, motion sensors, cameras and lighting. It can reduce light output by up to 30%, cause AC units to work harder, and cause overheating in equipment. This leads to increased energy bills, increased maintenance costs and lower productivity.

## How To Tackle High-Level Cleaning Safely?

Using a powerful Vacuum System with High Reach Suction Poles allows your team to safely remove dust from heights of up to 12 metres, from the safety of the ground. This removes the need for ladders, scaffolding and other high-access equipment.

*Our Internal Vacuum range is suitable for a variety of locations, including:*

- ▶ Warehouses & distribution centres
- ▶ Schools, universities, libraries & sports halls
- ▶ Hospitals & care homes
- ▶ Shopping centres & commercial buildings



## How To Safely Use High-Reach Vacuum Systems?

There are many health & safety considerations to consider during high-reach cleaning; it is vital not only to keep the operator safe, but also to keep the public safe.

For instance, basic operational risks include building layout, obstacles, operator health, and the timing of the cleaning operation, especially during busy times with heavy foot traffic.

It is crucial to consider trip hazards, such as trailing hoses, injuries from falling objects or poles, and improper manual handling of equipment. Operators should have sufficient experience in using high-reach poles.

It is unlikely that an operator will lose control of a high-reach suction pole during correct usage. But in such an event where the pole is starting to fall, the operator must quickly move in the direction of the fall to correct the pole's position.

*Please remember to fill out risk assessments as needed to minimise risks, including:*

- ▶ Surroundings, and day/time of cleaning
- ▶ PPE and high visibility clothing provision
- ▶ Warning signs to indicate cleaning in progress

Therefore, by prioritising cleaning high-level areas, we can improve indoor air quality, enhance energy efficiency, and reduce the risk of fire hazards. By investing in proper equipment, such as high-reach vacuum systems, we are ensuring safer cleaning practices that protect both operators and the public.

It is essential to carry out thorough risk assessments follow safe cleaning and maintenance procedures to mitigate potential risks and maintain cleaner, healthier environments for everyone.

