



Reducing Combustible Dust Risks in ATEX Environments

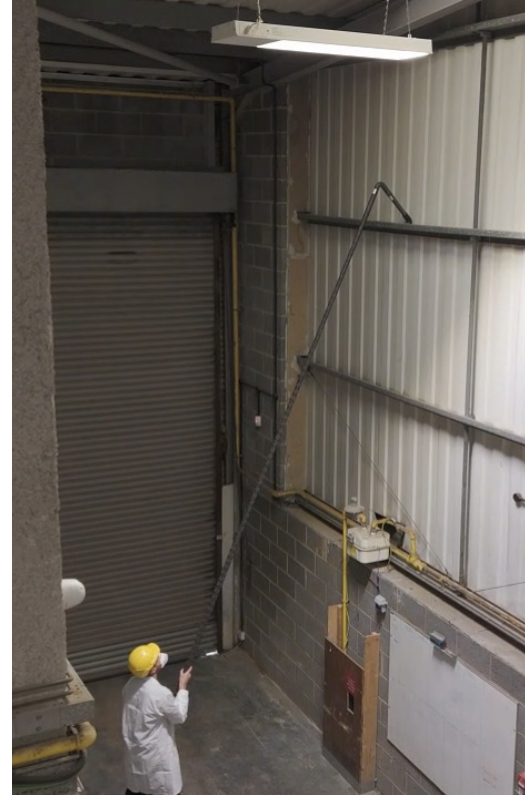
What is an ATEX environment?

ATEX cleaning is critical in maintaining safety within industries that operate in potentially explosive environments. The term “ATEX” is a European Union directive meaning “ATmosphères EXplosibles”. This sets strict safety standards for equipment and workspaces where explosive hazards may exist. Understanding and adhering to these regulations is essential in any operations building dealing with combustible dust, vapours or gases.

Combustible dust is composed of tiny particles such as flour, sugar, or wood dust, that become flammable when suspended in the air. In a dust cloud, these particles are surrounded by oxygen, making them extremely easy to ignite, as the three elements that make up a fire hazard are: oxygen, fuel and heat. This is where specialised equipment such as ATEX vacuums come in. ATEX vacuum cleaners are engineered to minimise ignition risks and ensure a safe working environment.

Understanding ATEX zone classifications is crucial for selecting the appropriate vacuum system. These classifications are categorised based on how frequently an explosive atmosphere may occur. The ATEX zone classifications are as follows:

Zone: A place in which an explosive atmosphere is...	Gases	Dusts
... continually at present	0	20
... likely to occur in normal operation occasionally	1	21
... unlikely to occur in normal operation and only for very short durations	2	22



Features and Applications of ATEX Vacuums.

ATEX vacuums are expertly engineered to eliminate ignition sources, by removing heat from the equation. These systems are vital in various industries including pharmaceuticals, wood and paper manufacturing, foodstuffs and more.

By using ATEX vacuums, businesses can ensure compliance with legal safety standards while maintaining a clean environment.

At skyVac, we supply powerful, ATEX-certified industrial vacuums designed for the safe and effective cleaning of Zone 22 locations. Our systems are designed for high-level cleaning projects up to 12 meters (40 feet). Our ATEX range also features:

BRUSHLESS MOTORS:

Frictionless technology minimises operational heat and static charge, and the vacs are earthed to fully eliminate any risk of static charge.

SEALED UNIT AND HIGH FILTRATION:

The sealed vacuum head and a high filtration system that prevents airflow through the motor housing, eliminating any risk of stray particles infiltrating internal components.

ANTI-STATIC HIGH REACH SUCTION POLES AND ACCESSORIES:

These pole sets and end tools are approved for use in Zone 21 and Zone 22 and are made from anti-static carbon fibre materials, and feature a safety locking mechanism for maximum stability

They are perfect for removing hazardous dust, providing easy access to hard-to-reach areas from the ground floor to high beams, ducts, pipes, and air vents.

The skyVac ATEX Range:

Staying compliant with ATEX regulations is crucial for maintaining safety in hazardous operational buildings. By selecting skyVac's ATEX range, you choose reliable cleaning solutions that emphasise safety and efficiency.

Explore our ATEX vacuum systems below:

Specification	Atex A37	Atex A37G
Wattage	1400w	1100w
Airflow	3200 LPM	3600 LPM
Capacity	37 litre	37 litre
Decibel Level	60 dB	73 dB
Weight	13kg	42kg
Mains Connection	240v	240v or 110v
Dimensions (cm)	45(l) x 44((w) x 75(h)	56(l) x 57((w) x 124(h)
Filter	PET (Polyethylene Terephthalate)	Anti-static Star Filter L-Class