

**WET
& DRY
USES**

skyVac

**UP TO 4 STOREYS
12M/40FT**

**FEATHERWIEGHT
POLES AT JUST
316G PER 1.5M**

**PULL START
OR KEY START
OPTION**

**COMPLETELY
INDEPENDANT
MOBILE & SELF
POWERED.
NO NEED FOR
MAINS POWER.**

**CLEAN HIGHER.
FASTER & SAFELY
FROM THE GROUND**

**ON-BOARD
HONDA ENGINE**

INTERCEPTOR®

The skyVac Interceptor Wet & Dry Gutter Vacuum with on board Honda power plant is the ultimate gutter vacuum system. Inspired by the Industrial 85, our design team wanted to create a completely power independent system, so no need for mains power or generators. Boasting 155 Inch Water lift, the lift capacity is immense, for fast results - first time.

We've increased the drum size, added a drain hose to remove water, offered an optional sieve basket - so whether you are dealing with gutter sludge, tufts or dry leaves you can power bigger projects - with less down time.

Sitting on a robust all terrain multi directional trolley, the skyVac Interceptor features an on-board power plant making it completely independent of any electrical supply requirements. Powered by a robust worldwide compliant Honda engine, means this unique system can clean anywhere in the world at any time.

Designed specifically with the user in mind, the skyVac Interceptor is housed on an all-terrain chassis allowing you to manoeuvre the system down side paths and narrow spaces with ease.

With an extremely powerful vacuum capacity, this unique system will lift and remove the heaviest of waste matter from gutters up to 40ft from the ground, with the added addition of a blow feature to aid cleaning and self-un-blocking.

EVERYDAY DOMESTIC & COMMERCIAL USE

IDEAL FOR:

- Gutter cleaning (up to 4 storeys high)
- Industrial and commercial gutter cleaning for wet and dry application
- Immense lifting capability for the most stubborn gutter growths
- Robust all terrain trolley with castors

feefo  #FeefoTrusted



Mobile Wet & Dry Industrial Gutter Vacuum

Machine Specification

Motor Wattage:	3600 Watt (5.5HP Honda Petrol Engine)
Water Lift:	155"
Air Flow Movement:	8,000 LPM
Cyclonic Entry Port:	50mm
Container:	90 Litre
Weight:	78kg Pull Start / 87kg Key Start
Decibel Level:	107 dB
Dimensions (cm):	140(l) x 63(w) x 104.5(h)

Optional Add Ons...



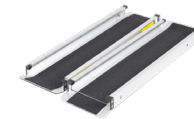
Sieve Basket



skyVac® Cartridge Filter



skyVac® 'Real-Time' Inspection System



Telescopic Ramps

Included as standard



5M 50mm Wire Reinforced Hose



Hose Cuffs



Hose Bag



ELITE End Tools & 135° Hairpin Neck



Carry Bag

Packages (Available with 4, 6 or 8 poles)

ELITE 50mm Clamped 4 pole package



4 POLES - reach 6m/20ft
6 POLES - reach 9m/30ft
8 POLES - reach 12m/40ft



12 MONTHS
Manufacturers' Warranty



30 DAYS
Money back Guarantee



SPEEDY
Free Delivery

T: 01604 968700 | E: info@skyvac.com